

PROJECT NAME: \_\_\_\_\_ DATE: \_\_\_\_\_

JOB LOCATION: \_\_\_\_\_ SPECIFIER: \_\_\_\_\_

PLEASE USE ADOBE READER OR ADOBE ACROBAT TO FILL OUT AND SAVE FORM. USING OTHER PROGRAMS COULD RESULT IN UNSAVED DATA.

**APPLICATIONS**

If you select a Forms+Surfaces System, please skip the Project Details, Lite Descriptions and Glass Characteristics sections.

**Forms+Surfaces Systems**

- LEVELr Wall Cladding System
- LEVELr Column System
- LEVELr Elevator Interiors
- LEVELe Wall Cladding System
- LEVELe Column System
- LEVELe Elevator Interiors
- LEVELc-2000 Elevator Interiors
- Glass Doors
- Stile & Rail Doors
- LightPlane Panels (View only)

**Other Applications\***

- Loose Lite(s)
- Other: \_\_\_\_\_

\*For Other Applications, please fill out all sections.

**PROJECT DETAILS**

Please choose **one** option from each category.

**Installation Type**

- Captured Top & Bottom Only
- Fully Framed
- Mounted to a Solid Substrate
- Curtain Wall/IGU
- Post Mounted with Holes
- Water Feature

**Glass Thickness**

- 5/16" (7.7 mm)
- 7/16" (11.1 mm)
- 9/16" (13.7 mm)

**Environment**

- Interior, Standard Humidity
- Interior, High Humidity
- Exterior, Exposed Setting
- Exterior, Covered Setting

**Lighting Conditions**

- Natural
- Backlit
- Spotlight
- Other (please provide details):  
\_\_\_\_\_  
\_\_\_\_\_  
\_\_\_\_\_

**LITE DESCRIPTION**

Description (include part number, if available)	Quantity	Size (width x height)
_____	_____	_____
_____	_____	_____
_____	_____	_____
_____	_____	_____

**GLASS CHARACTERISTICS**

Please choose **one** option from each category.

**Safety Standards**

- Annealed
- Tempered\*
- Heat Strengthened\*\*

**Profile**

- Flat
- Curved (please attach drawing)

\*Tempering is required for load bearing holes and cutouts. Please note that 5/16" laminated glass can only be tempered to a max of 47" x 80".

\*\*Heat strengthening is recommended for glass over 50 square feet.

**PROCESSING REQUIREMENTS**

Please choose **all** options that apply and provide detail as needed.

**Edges**

- Seamed Edges  Top  Bottom  Left Side  Right Side
- Flat Machine Polished Edges  Top  Bottom  Left Side  Right Side

**Cuts**

- Notches\*  Yes  No \_\_\_\_\_
- Internal Cutouts\*  Yes  No \_\_\_\_\_
- Pattern Cuts\*  Yes  No \_\_\_\_\_
- Holes\*  Yes  No \_\_\_\_\_

**ANSI**

- ANSI logo on glass\*\*  Yes  No
- ANSI logo type  American  Canadian \_\_\_\_\_
- ANSI logo placement  Standard  Custom\*\*\* \_\_\_\_\_

\*If yes, please attach drawing.

\*\*ANSI logo is required for elevator interiors.

\*\*\*If ANSI logo placement is custom, please provide details.

**DESIGN CHARACTERISTICS**

Please choose **one** option from each category.

**Configuration**

- View
- Reflect

**Finish**

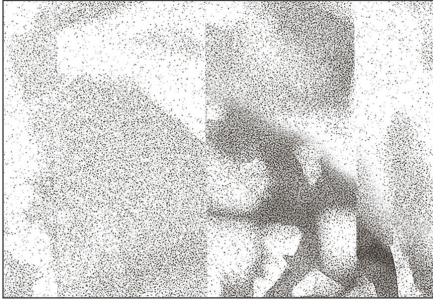
- Standard
- Pearlex+
- Standard / Pearlex+\*

\*One side Standard / one side Pearlex+ (View configuration only).

STANDARD INTERLAYERS

Please choose **one** interlayer option below.

Acero™



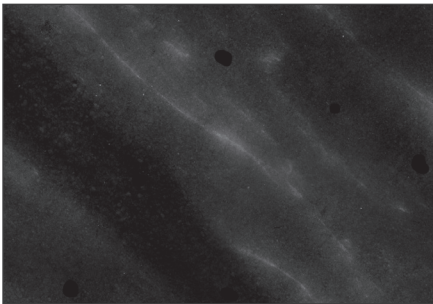
Arctic™



Black Fig™



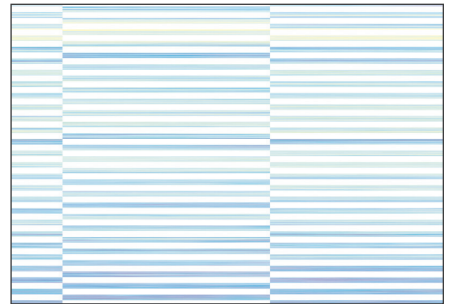
Black Marble™



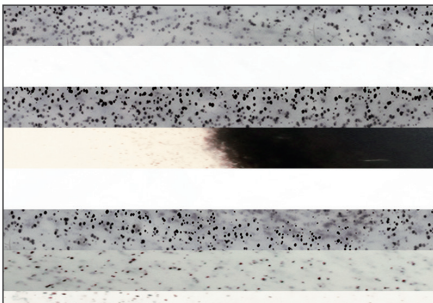
Highlight™



Marea™



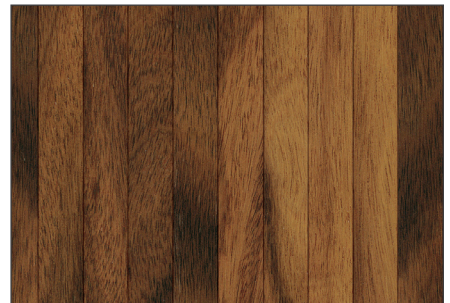
Raya™



Strata™



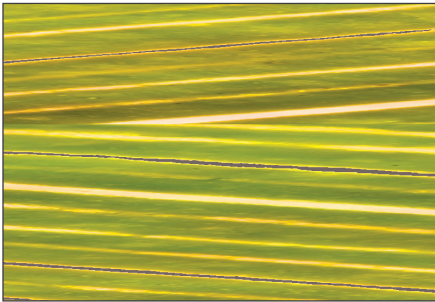
Tali™



STANDARD INTERLAYERS

Please choose **one** interlayer option below.

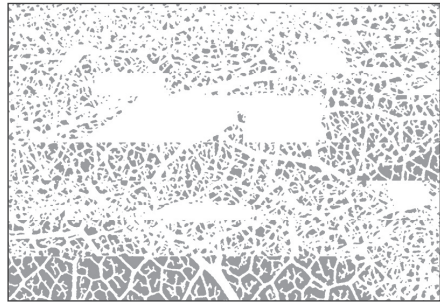
Tandarra™



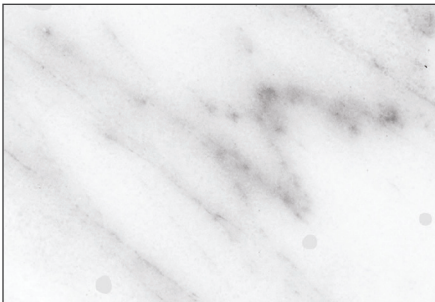
Timber™



Umbra™



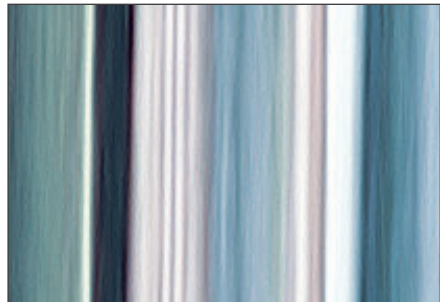
White Marble™



Yucca™



Yucca Blue™



Yucca Smoke™



NOTES

Four horizontal lines for taking notes.

Please send completed forms to [sales@forms-surfaces.com](mailto:sales@forms-surfaces.com) or contact us at 800.451.0410 with any questions.