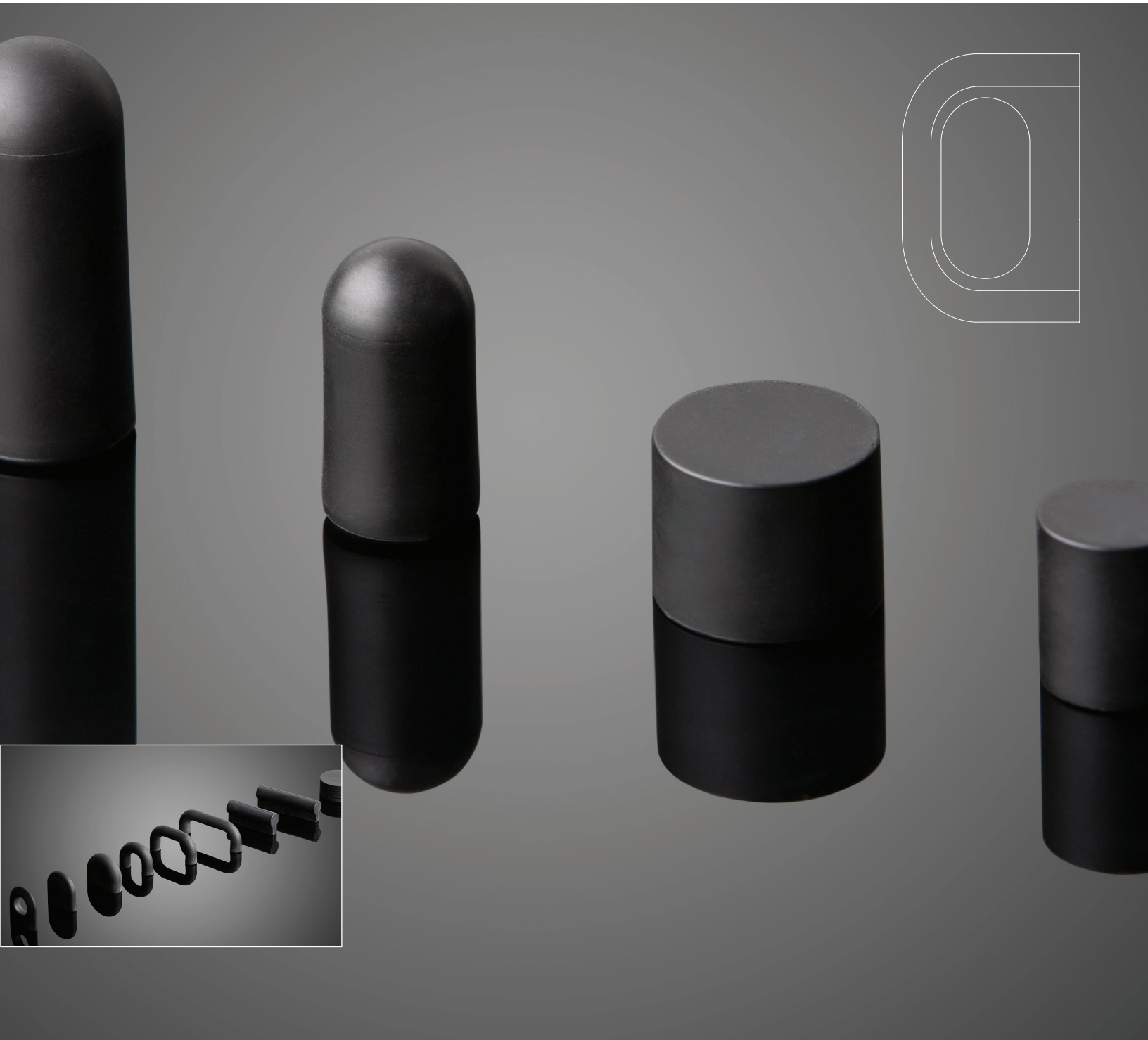




# NEOPRENE CABINET PULLS

PRODUCT DATA





# NEOPRENE CABINET PULLS

PRODUCT DATA

The Neoprene Collection of cabinet hardware and accessories consists of simple geometric forms molded in neoprene over metal cores. The soft, tactile surface of the neoprene is safe and inviting to touch. All items in the collection are black.

## PRODUCT DETAILS

The following applies to all Mesa Cabinet Pull designs shown on pages 1-3.

MATERIAL & FINISH			INSTALLATION	MAINTENANCE
Neoprene	BLACK	Molded Neoprene over metal cores	Neoprene Cabinet Pulls are designed to be used with 3/4" (19mm) thick cabinet doors or drawers and are installed using a variety of screws (included with order). Please contact Inside Sales for more information regarding screw sizes and lengths.	Neoprene Cabinet Pulls are well-suited for interior or exterior use. Regular maintenance will help ensure the lasting beauty of each pull.  For more information, please refer to Door Hardware Care & Maintenance found on our website.

## DESIGN OPTIONS

HC201	HC202	HC205	HC206
HC207	HC208	HC209	HC213
HC215	HC216	HC220	HC221



**NEOPRENE** CABINET PULLS

PRODUCT DATA

DESIGN OPTIONS

<p><b>HC223</b></p>	<p><b>HC224</b></p>	<p><b>HC225</b></p>
<p><b>HC230</b></p>	<p><b>HC231</b></p>	<p><b>HC241</b></p>
<p><b>HC242</b></p>	<p><b>HC250</b></p>	<p><b>HC251</b></p>
<p><b>HC253</b></p>	<p><b>HC254</b></p>	<p><b>HC255</b></p>



# NEOPRENE CABINET PULLS

PRODUCT DATA

## DESIGN OPTIONS

<p>.875" (22mm) diameter 3.063" (78mm) .875" (22mm)</p>	<p>1.625" (41mm) diameter 1.375" (35mm) 1.625" (41mm)</p>	<p>1.375" (35mm) diameter 1.438" (37mm) 1.375" (35mm) 1.063" (27mm)</p>
<p>HC280</p>	<p>HC281</p>	<p>HC290</p>
<p>1.938" (49mm) diameter 2.188" (56mm) 1.938" (49mm) 1.438" (37mm)</p>	<p>2" (51mm) diameter 2.25" (57mm) 2" (51mm) 1.188" (30mm)</p>	
<p>HC291</p>	<p>HC296</p>	

## HOW TO SPECIFY

Provide cabinet pull model number and quantity. Refer to the standalone Hardware Price List on our website for list pricing.