



BIKE GARDEN™ BIKE RACK

PRODUCT DATA





BIKE GARDEN™ BIKE RACK

PRODUCT DATA

Inspired by organic forms, the **Bike Garden** offers a truly unique solution to the increasing challenges of bicycle parking and security. Individual “stems” of varying heights are arranged in three different configurations to accommodate virtually any setting and provide multiple locking points for securing bike frame and wheels. Constructed of corrosion-resistant stainless steel, Bike Garden's stems can be cast in place or surface mounted.

MATERIALS & FINISHES

INSTALLATION & MAINTENANCE

MATERIALS	FINISH	GUIDELINES & SECURITY	INSTALLATION	MAINTENANCE
<ul style="list-style-type: none"> Each stem body is stainless steel tubing; head and optional surface mount foot are cast stainless steel. 	<ul style="list-style-type: none"> Available in stainless steel with a radial Satin finish and Ceramiloc treatment or powdercoated. See the Forms+Surfaces Powdercoat Chart for details. Custom RAL colors are available for an upcharge. 	<ul style="list-style-type: none"> Configurations A, B, and C meet Association of Pedestrian and Bicycle (APBP) guidelines. Configuration and locking point details can be found on below and on page 3. 	<ul style="list-style-type: none"> Bike Garden can be cast-in-place or surface mounted. Stainless steel anchors and tamper-resistant stainless steel bolts are sold separately. 	<ul style="list-style-type: none"> Metal surfaces can be cleaned as needed using a soft cloth or brush with warm water and a mild detergent. Avoid abrasive cleaners.

CERAMILOC TREATMENT


Ceramiloc is an invisible surface treatment that offers significantly enhanced protection from weather and graffiti and increases the maintenance ease of stainless steel. Ceramiloc combines ceramic durability with an unparalleled ability to lock out water spots, fingerprints, graffiti and more. Patented technology bonds nano-silica particles to the surface of the stainless steel. The treatment minimally alters the surface appearance of the stainless and offers numerous benefits:

- **Easily Cleaned:** The Ceramiloc treatment creates a surface that simultaneously resists fingerprints and is easy to clean. Water spots, grease marks and more can be quickly wiped away. It also creates an “anti-graffiti” surface – even permanent marker is easily removed with a clean microfiber towel and water.
- **Durable:** Ceramiloc-treated materials are abrasion- and scratch-resistant. The treatment is permanent, UV stable, and will not degrade or discolor over time.
- **Environmentally Sound:** The Ceramiloc treatment is a no-VOC, water-based process. Because Ceramiloc surfaces are so easily maintained, cleaning solutions and maintenance are kept to a minimum.

LOCKING POINT EXAMPLES

The Bike Garden Bike Rack was designed to allow for a multitude of locking point and configuration options to meet your individual needs. Please note that for optimal performance, Forms+Surfaces recommends a 36" center-to-center placement. See diagrams below, technical drawings, and the separate installation instructions document for more details.



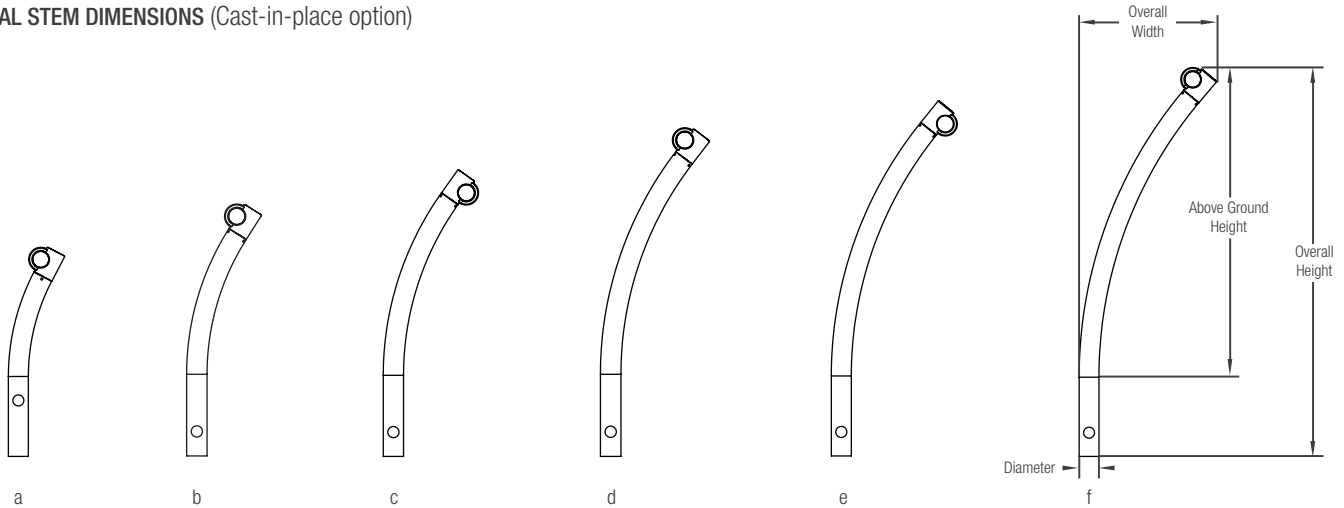
 A standard U-lock can be locked at this location to meet APBP guidelines for security and functionality.



BIKE GARDEN™ BIKE RACK

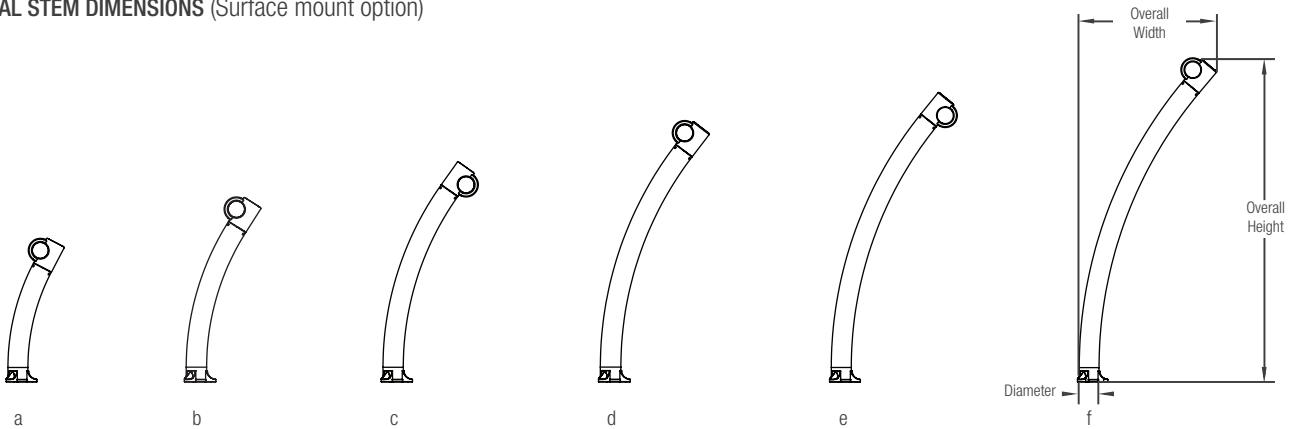
PRODUCT DATA

NOMINAL STEM DIMENSIONS (Cast-in-place option)



STEM	ABOVE-GROUND HEIGHT	OVERALL HEIGHT	OVERALL WIDTH	DIAMETER	WEIGHT
a	16.2" (411 mm)	26.2" (665 mm)	7.1" (180 mm)	2.5" (63.5 mm)	8.6 lbs (3.9 kg)
b	20.8" (528 mm)	30.8" (782 mm)	9.2" (234 mm)	2.5" (63.5 mm)	9.8 lbs (4.4 kg)
c	25.3" (643 mm)	35.3" (897 mm)	11.8" (300 mm)	2.5" (63.5 mm)	11.3 lbs (5.1 kg)
d	29.9" (759 mm)	39.9" (1,013 mm)	13.3" (338 mm)	2.5" (63.5 mm)	12.7 lbs (5.8 kg)
e	34.4" (874 mm)	44.4" (1,128 mm)	15.8" (401 mm)	2.5" (63.5 mm)	14.1 lbs (6.4 kg)
f	39.1" (993 mm)	49.1" (1,247 mm)	17.3" (439 mm)	2.5" (63.5 mm)	15.4 lbs (7.0 kg)

NOMINAL STEM DIMENSIONS (Surface mount option)



STEM	OVERALL HEIGHT	OVERALL WIDTH	DIAMETER	WEIGHT
a	18.0" (457 mm)	7.1" (180 mm)	2.5" (63.5 mm)	9.1 lbs (4.1 kg)
b	22.6" (574 mm)	9.2" (234 mm)	2.5" (63.5 mm)	10.3 lbs (4.7 kg)
c	27.1" (688 mm)	11.8" (300 mm)	2.5" (63.5 mm)	11.8 lbs (5.4 kg)
d	31.8" (808 mm)	13.3" (338 mm)	2.5" (63.5 mm)	13.2 lbs (6.0 kg)
e	36.1" (917 mm)	15.8" (401 mm)	2.5" (63.5 mm)	14.6 lbs (6.6 kg)
f	40.9" (1,039 mm)	17.3" (439 mm)	2.5" (63.5 mm)	15.9 lbs (7.2 kg)

T 800.451.0410 | www.forms-surfaces.com

FORMS+SURFACES®

© 2021 Forms+Surfaces® | All dimensions are nominal. Specifications and pricing subject to change without notice. For the most current version of this document, please refer to our website at www.forms-surfaces.com.



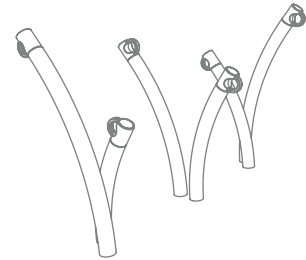
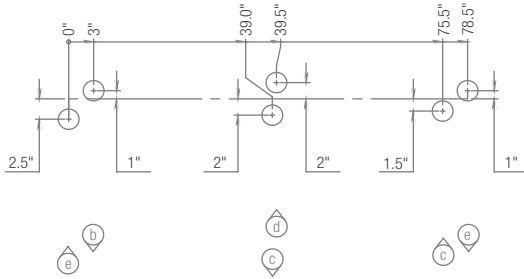
BIKE GARDEN™ BIKE RACK

PRODUCT DATA

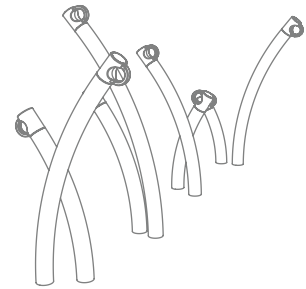
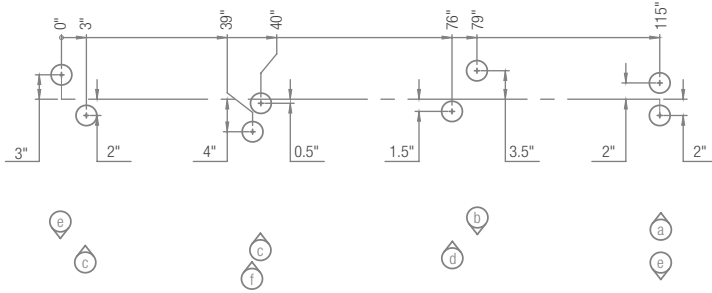
CONFIGURATION OPTIONS

⤴ indicates the direction of the stem curve; letters represent the specific models to the right.

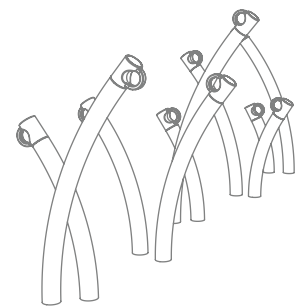
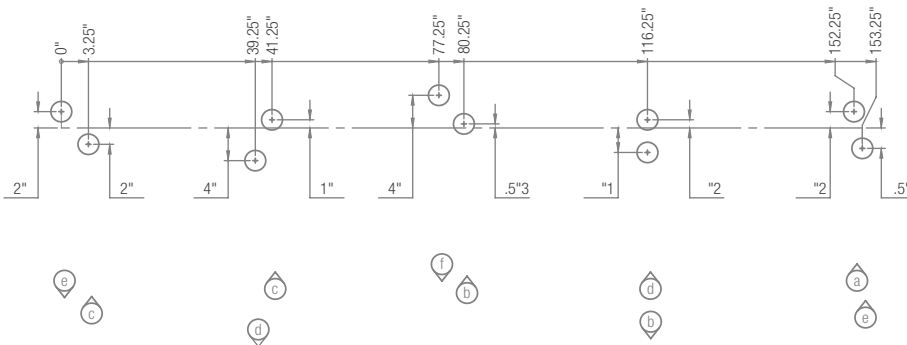
Configuration A



Configuration B



Configuration C





BIKE GARDEN™ BIKE RACK

PRODUCT DATA

ENVIRONMENTAL CONSIDERATIONS

- Please refer to the Bike Garden Bike Rack Environmental Data Sheet for detailed environmental impact information.
- Bike Garden metal components are up to 76% recycled content and are fully recyclable.
- Standard powdercoat finishes are no-VOC; non-standard powdercoat finishes are no- or low-VOC, depending on color.
- Low maintenance.

MODEL NUMBERS AND DESCRIPTIONS

MODEL	DESCRIPTION
CONFIGURATION A-CIP	Bike Garden Bike Rack, cast-in-place, (1) b, (2) c, (1) d, (2) e
CONFIGURATION B-CIP	Bike Garden Bike Rack, cast-in-place, (1) a, (1) b, (2) c, (1) d, (2) e, (1) f
CONFIGURATION C-CIP	Bike Garden Bike Racks cast-in-place, (1) a, (2) b, (2) c, (2) d, (2) e, (1) f
CONFIGURATION A-SM	Bike Garden Bike Rack, surface mount, (1) b, (2) c, (1) d, (2) e
CONFIGURATION B-SM	Bike Garden Bike Rack, surface mount, (1) a, (1) b, (2)c, (1) d, (2) e, (1) f
CONFIGURATION C-SM	Bike Garden Bike Rack, surface mount, (1) a, (2) b, (2) c, (2) d, (2) e, (1) f

PRODUCT OPTIONS

The following options are available for an upcharge

Stainless steel anchors and tamper-resistant stainless steel bolts	Custom RAL powdercoat color
Add powdercoat color from F+S Powdercoat Chart	

LEAD TIME: 4 weeks. Shorter lead times may be available upon request. Please contact us to discuss your specific timing requirements.

PRICING: Please contact us at **800.451.0410** or **sales@forms-surfaces.com**. At Forms+Surfaces, we design, manufacture and sell our products directly to you. Our sales team is available to assist you with questions about our products, requests for quotes, and orders. Territory Managers are located worldwide to assist with the front-end specification and quoting process, and our in-house Project Sales Coordinators follow your project through from the time you place an order to shipment.

TO ORDER SPECIFY: Quantity, model or configuration, stainless steel finish or powdercoat color, cast-in-place or surface mount. Quote/Order Forms are available on our website to lead you through the specification process in a simple checkbox format.